

# PENTENS HP-023

## High Pressure Crack Injection Systems & Equipment

### Product Data Sheet

#### Description

PENTENS continuously develops and refines Crack Injection Systems and technology. High Pressure Polyurethane is a commonly and widely used system. The right injection method should be identified before starting the project.

Epoxy injection resins usually “fail” in stopping active water leakages because of their slow reaction time and inability to bond to wet surfaces; this failure is resolved with PENTENS Polyurethane System. The active flowing water will be stopped by injecting PENTENS PU-300, 101, 107, 168, 108, etc. which reacts quickly with the water to form an expanding foam. The final product is a semi-rigid or flexible closed-cell and strong bonding seal. To control the speed of the chemical reaction, a certain percentage of accelerator is added. The amount of accelerator added controls the gel time ranging from a few seconds to several minutes.

#### Uses

All kinds of cracks and joints in concrete, such as:

- Cold joints
- Expansion joints
- Working cracks

#### Advantages

- Heavy duty for daily use.
- Lightweight.
- Create pressure as high as 10,000 psi.
- Easy to use, clean and maintain.
- Pressure gauge provided.
- Hopper included.
- Compatible with the complete line of PENTENS PU Injection Grouts and epoxy resins.

#### Technical & Physical Data

Max. Pressure	10,000 psi
Flow	0.74 liters /minute
Voltage	110V/220V
Weight	9kg
Recommended drill width	14mm

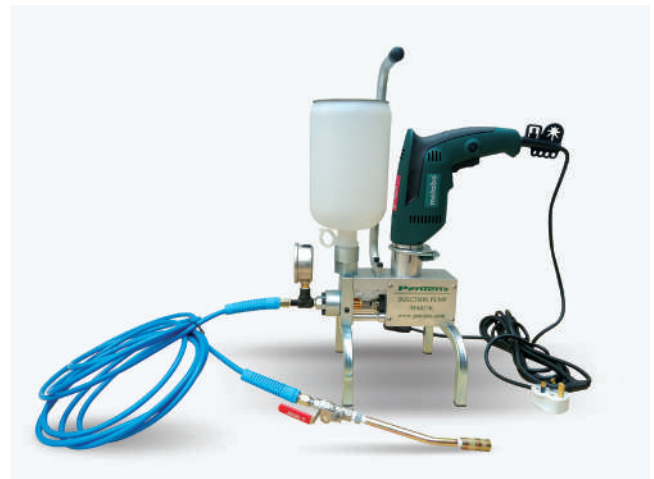
#### Professional Equipment for PU Injection

##### ● MA023K – Injection Pump

A very powerful, extremely lightweight injection pump for the complete line of PENTENS injection grouts. Suitable for mid-size jobs and daily use. This is the perfect machine for waterproofing contractors performing commercial work and residential injection.

This pump is useful for getting in and out of basements and confined areas. The MA023K is very compact. But do not underestimate its power. It creates pressures as high as 10,000 psi.

The modular design makes it easy to maintain and clean. Parts can be replaced by contractors as needed.



• **High Pressure Hose & Shut-Off Valve**



Hose Length: 5M

• **Packers & Coupler**



Packer Sizes:

Code	Sizes
AC023-8T	ø10mm x 80mm
AC023-8	ø13mm x 80mm
AC023-10	ø13mm x 100mm
AC023-15	ø13mm x 150mm
AC023-20	ø13mm x 200mm
AC023-30	ø13mm x 300mm

**Instruction for Use**

**Step 1: Clean surfaces**

**Step 2: Drill injection holes**

**Step 3: Insert injection packers**

**Step 4: Flush crack if necessary**

**Step 5: Crack injection**

(For detailed information, please refer to PU-300, PU-101, PU-107, PU-168, and PU-108 product data sheets.)

**Step 6: Clean Up**

Once the resin hardens, it is almost impossible to dissolve it. Any spilt resin must be cleaned immediately before the resin sets.

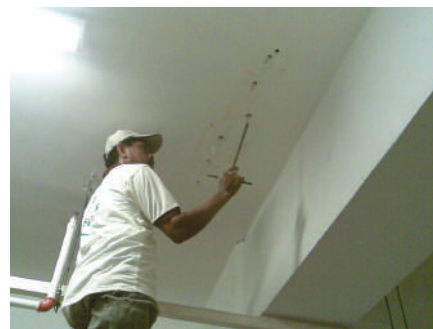
Clean the injection pump, mixers and any other tools that come in contact with the product thoroughly using PENTENS SO3 or a solvent. The packers can be removed within 24 hours and the holes should be patched. If desired, an electric grinder can be used to remove excess cured grout that flew out from the cracks.



1. Drill injection holes.



2. Insert injection packers.



3. Crack injection.



4. Curing and patching.