

Pentens® ECO-600TR

Epoxy Clear Coat

DESCRIPTION

PENTENS ECO-600TR is a special formulated two component solvent-less epoxy transparent coating which is good abrasion resistant, chemical resistant, high polish gloss floor protective coat.

USES

- Marble-like design/ Decorative floor
- Polished Porcelain tile design floor
- Food / Hygienic Industrials
- Electric / Clean room design
- Car park / Traffic Zones design
- Assembling plants/Storage and logistic areas
- Chemical and pharmaceutical industries
- Institutional areas

ADVANTAGES

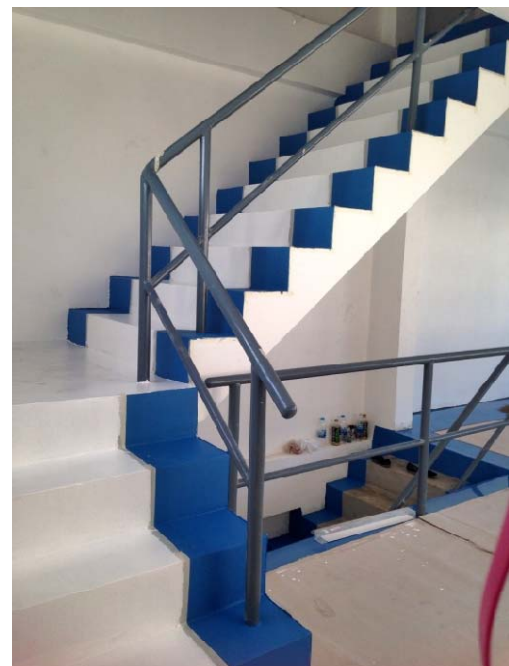
- Polish gloss
- Seamless and easy to clean
- Self-leveling
- High mechanical loading capacity
- Extremely high chemical resistance against a range of aggressive chemicals, oil, various solvents, etc.

MIXING

PENTENS ECO-600TR consists of exact quantities of base and hardener components contained within the same pack. Before application, the base and the hardener components are carefully mixed together by means of a slowly rotating electric drill with paddle. To complete mixing the resin is poured from one can to another and mixed again. To ensure the correct mixing ratio and for ecological reasons packs should be emptied thoroughly.

TECHNICAL & PHYSICAL DATA

Form	Liquid
Flexural Strength (kgf/cm ²) (ASTM D790)	600
Tensile Strength (kgf/cm ²) (ASTM D638)	350
Compressive Strength (kgf/cm ²) (ASTM D695)	700
Pot life (25°C)	20 minutes
Consumption - Clear Protective Coat - Self-leveling Coat	0.3 kg/m ² 1.0 kg/m ²
Shelf Life & Storage Condition	1 year at dry and cool place
Packaging ECO-600TR-A ECO-600TR-B	15 kg pail 5 kg pail



APPLICATION

Application of PENTENS ECO-600TR is normally by means of steel floats or rubber squeegees. Freshly applied coatings have to be rolled with a spiked roller over the entire surface to remove entrapped air bubbles. To obtain higher anti-skid finishes the fresh PENTENS ECO-600TR coating should immediately be strewn with Silica sand in excess.

CURING

- Room Temp : 25°C ~35°C : 24 hrs
- Room Temp : 10°C ~25°C : 48 hrs
- Full mechanical and chemical resistant is achieved after 7 days for full cured.

CLEANING

Tools and equipment just can be clean with thinner immediately after use.

SAFETY

Impervious gloves and barrier cream should be used when handling these products. Eye protection should be worn. In case of contact with eyes, wash thoroughly with plenty of water and seek medical advice if symptoms persist. If contact with skin occurs, it must be removed before curing takes place. Wash off with an industrial skin clearer followed by plenty of soap and water. Do not use solvent. Ensure adequate ventilation when using these products.

IMPORTANT NOTES

- Minimum ambient and substrate temperature is 10°C.
- Apply only to clean, surfaces should be free of surface water and leaks.

APPLICATION STEP

SURFACE PREPARATION

The substrate must be clean and free from all loose particles, dust, cement laitance, oil and other contaminants.

PENTENS T-007 PRIMING



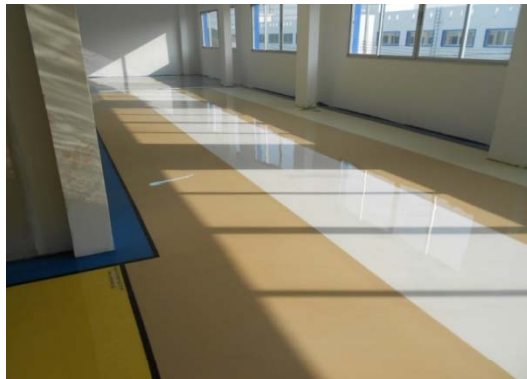
PENTENS T-303N SELF-LEVELING MOISTURE BARRIER



DRAWING



PENTENS E-610TR EPOXY TRANSPARENT COAT



SYSTEM DESIGN

1.) POLISHED PORCELAIN TILE FLOOR



2.) IMPRESSIONISM FLOOR



3.) MARBLE-LIKE FLOOR



4.) SELF-LEVELING INDUSTRIAL FLOOR



5.) PRODUCTION/CAR PARK FLOOR

